

FEATURES OF LED NEON RIBBON LIGHT

USER MANUAL

LED NEON RIBBON LIGHT

F21A

CONSTANT VOLTAGE

PLEASE READ THESE INSTRUCTIONS CAREFULLY BEFORE INSTALLATION LEAVE A COPY FOR THE END USER/MAINTENANCE ENGINEER FOR FUTURE REFERENCE

1. Rated input voltage: DC 24V
2. Rated Power: 12W/m
3. Dimension: 11.5*29mm
4. LED quantity: 60LEDs/mtr
5. LED Spacing: 16.67mm
6. Min. cutting length: 100mm (6LEDs)
7. Max. running length: 10mtrs for single end feed;
20mtrs for double ends feed.
8. Light color: RGB
Use LED Controller to realize color changes.
9. Min. bent diameter: 120mm
Do not twist the light .
10. Protection rate: IP68/IP65
11. Protection rate for IP68: Protected against dust and submersion in water (1meter above).
NOTE: All connector joints must be connected correctly to achieve IP68 rating.
12. Can be cut and extended
13. Long lifetime : 5 years
14. Working ambient temperature : -20℃~45℃
15. Operating(bending) ambient temperature: 0℃~45℃

ACCESSORIES(SALE SEPARATELY)

IP68 Screw Type Accessories Kit

Both Ends Connection Application Accessories Kit

01 Front Connector	1 pc
02 Front Connector	1 pc
Silicon Gasket	2 pcs
Aluminum Mounting Piece	2 pcs
Anti-skidding clip	2 pcs
Screws	8 pcs

Single End Connection Application Accessories Kit

Screw Front Connector Accessories Kit

01 (or 02) Front Connector	1 pc
Silicon Gasket	1 pc
Aluminum Mounting Piece	1 pc
Anti-skidding Clip	1 pc
Screws	4 pcs

Screw End Cap Accessories Kit

The Tail Plug	1pc
Aluminum Mounting Piece	1pc
Anti-skidding Clip	1pc
Silicon Gasket	1pc
Screws	4pcs

IP65 Sleeve Type Accessories Kit

Both Ends Connection Application Accessories Kit

01 Front Connector	1 pc
02 Front Connector	1 pc
Cover	2 pcs
Anti-skidding clip	4 pcs
HST	2 pcs

Remark: HST--Heat Shrink Tube

Both Ends Connection Auxiliary Accessories Kit

Glue	1 pc
------	------

Single End Connection Application Accessories Kit

Sleeve Front Connector Accessories Kit

01 (or 02) Front Connector	1 pc
Cover	1 pc
Anti-skidding clip	2 pcs
HST	1 pc

Remark: HST--Heat Shrink Tube

Sleeve End Cap Accessories Kit

End Cap	1pc
Shading Sheat	1pc
HST	1pc

Remark: HST--Heat Shrink Tube

Single End Connection Auxiliary Accessories Kit

Glue	1 pc
------	------

DIY ACCESSORIES(SALE SEPARATELY)

IP68 Clasp Type Accessories Kit

Single End Connection Application Accessories Kit

Clasp Front Connector Accessories Kit

01 (or 02) Front Connector	1 pc
Silicon Gasket	1 pc
U Steel Plate	1 pc
Anti-skidding Clip	1 pc

Clasp End Cap Accessories Kit

The Tail Plug	1pc
U Steel Plate	1pc
Anti-skidding Clip	1pc
Silicon Gasket	1pc

WARNING AND CAUTION

WARNING

1. Before making any cuts, installation, maintenance or connection, be sure the mains is disconnected!
2. NOTE: ALL CONNECTOR JOINTS MUST BE CONNECTED CORRECTLY TO ACHIEVE IP68 RATING.
3. Please operate this flex light by instructions, and confirm the work voltage, it must be matched with product requirements
4. Please confirm the polarity of connector before insertion front connection cable.
5. Connect and cut this product correctly. Any wrong operation will damage this product.
6. No pressing on this product during storage, long term pressing may lead to damage.
7. Using qualified DC power supply.
8. Min. bending diameter 120mm, see Fig. 1.
9. Do not twist the light as Fig. 2 and follow the correct bending way as Fig. 3.
10. Do not hang this flex light in sky as Fig. 4.
11. Cutting at wrong location will result in a failure of light! See Fig. 5.

CAUTION

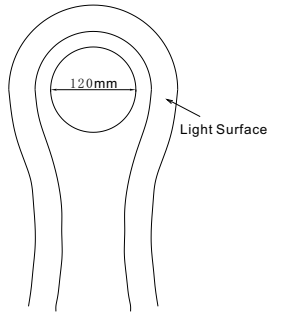
1. Suitable for mounting on normally flammable surfaces. .
2. Use only factory-recommended connectors and accessories.
3. To ensure its long life span, operate the light properly in accordance with the instructions.
4. Do not operate in more than 45°C ambient temperature.
5. Assemble the Connector correctly as Fig. 6.
6. Max. running length depends on the energizing way as Fig. 7 shown.
7. Do not operate light when ambient temperature is below 0°C that may injure the light .

ASSEMBLY AND INSTALLATION

1. Turn off the electricity before operation.
2. Cutting the light at correct location (if need) .
3. Assemble light according to Fig. 8, Fig. 9, Fig. 10.
4. Install U channel and light according to Fig. 11.
5. Wiring all connectors to the power line and checking whole circuit wiring. Cable color coding basics Refer to Fig. 12.
6. Applying controller to Fig. 13.

FIGURES

Fig. 1 Minimum bent diameter 120mm



3

Twist the light is forbidden and correct bending way

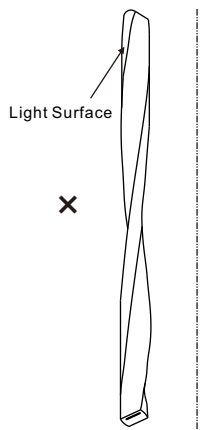


Fig. 2

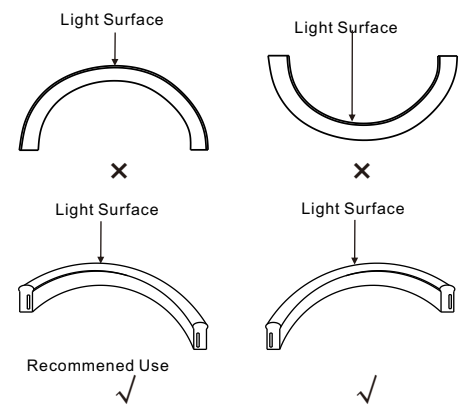
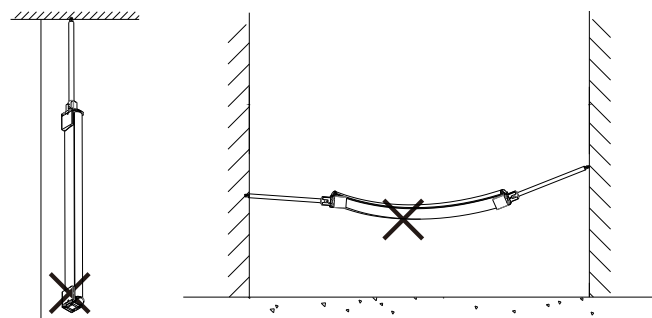


Fig. 3

Fig. 4 Hang suspended installation as the picture illustrated is forbidden



①

②

4

Fig. 5 Unit cutting guide

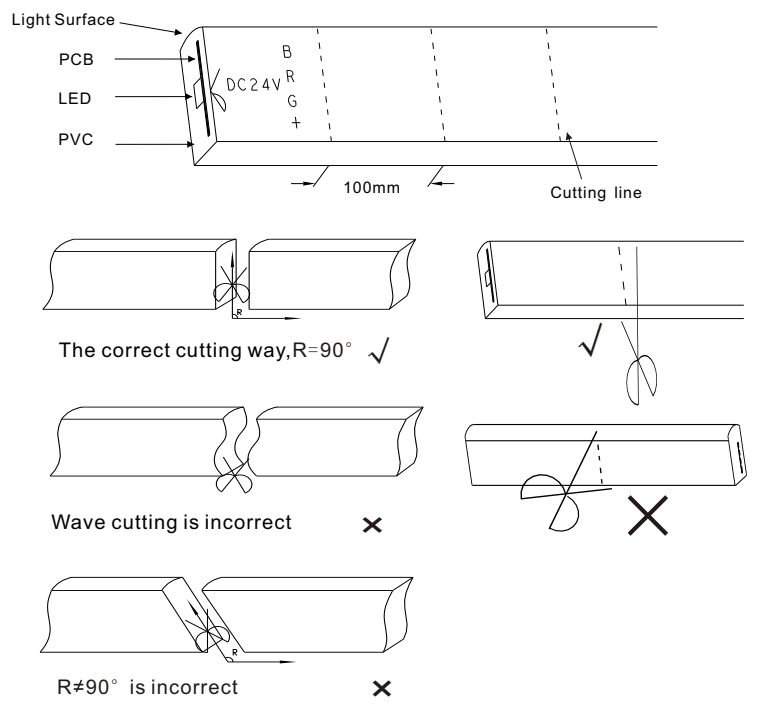
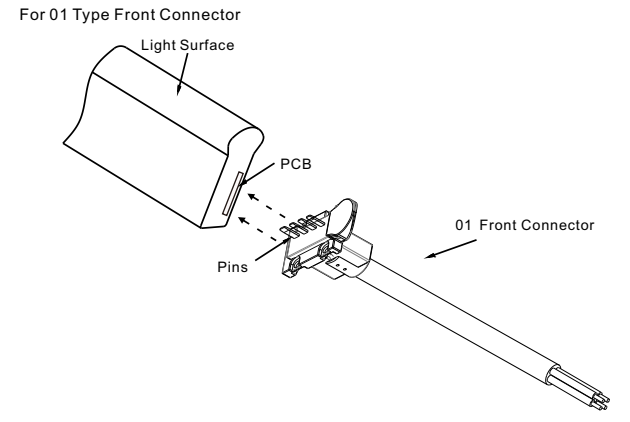


Fig. 6 Correct insert position of connector pins



5

Fig. 9 IP65 Sleeve Type Connector Assemble

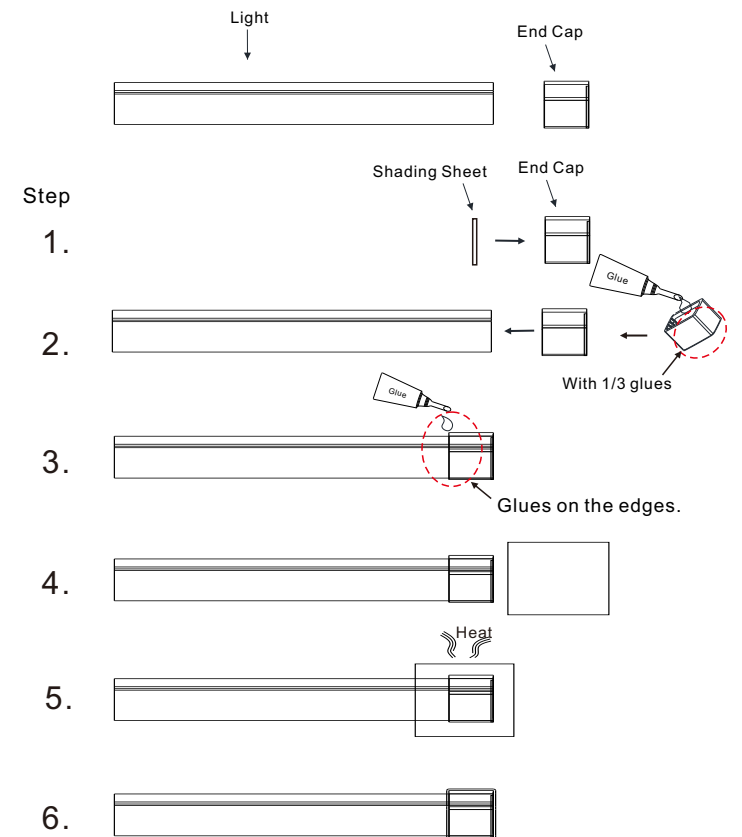
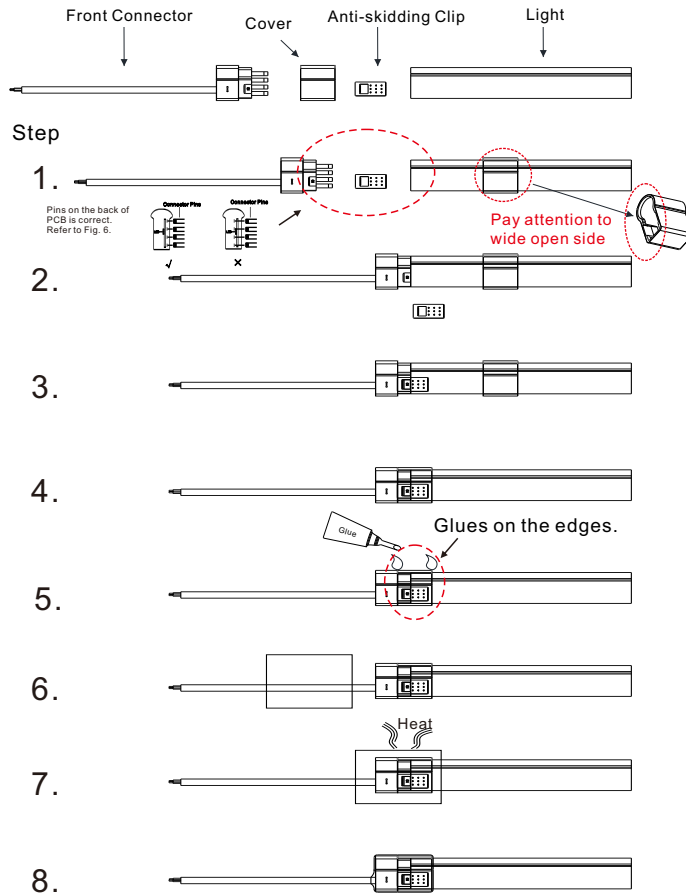
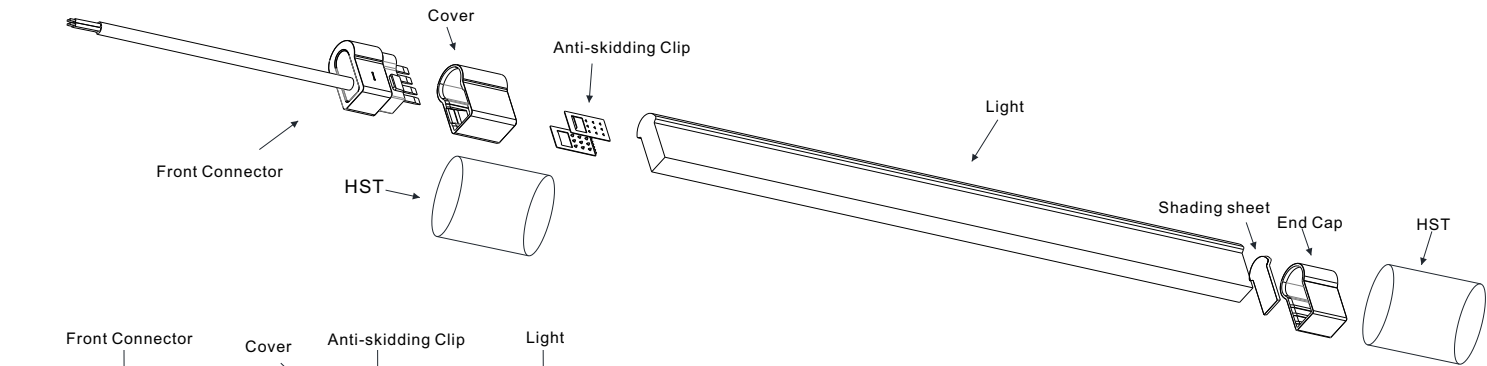
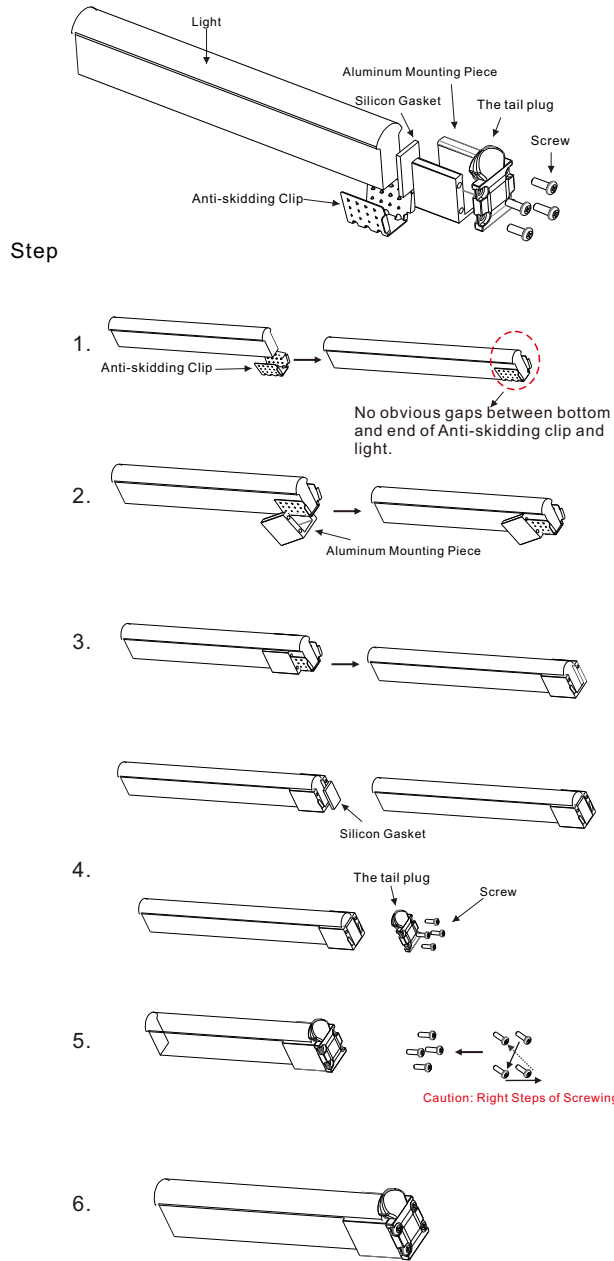
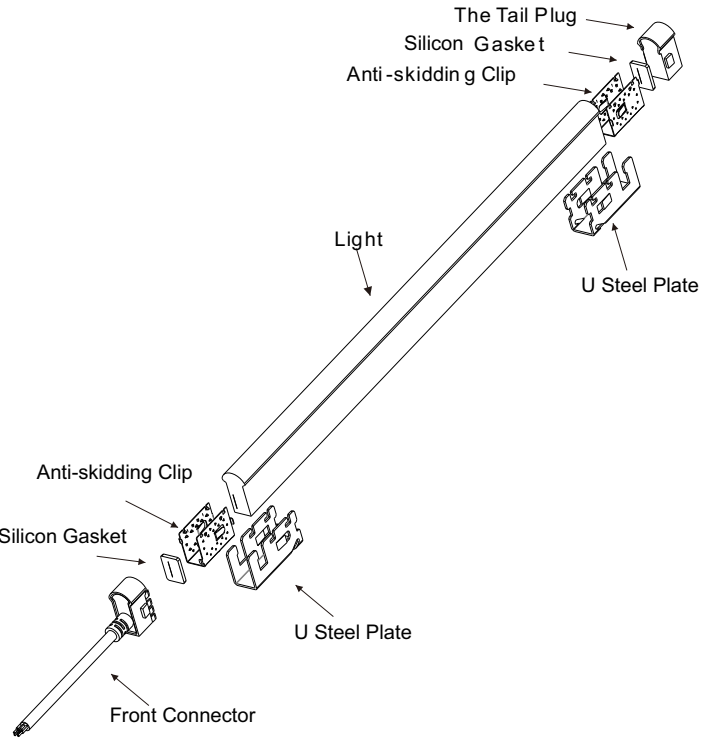


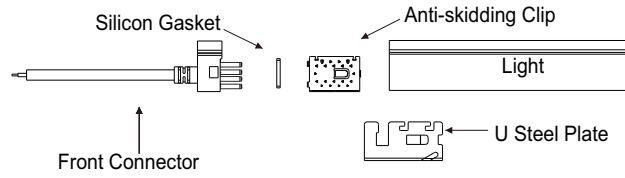
Fig.10 IP68 Clasp Type Connector Assemble

Diagram

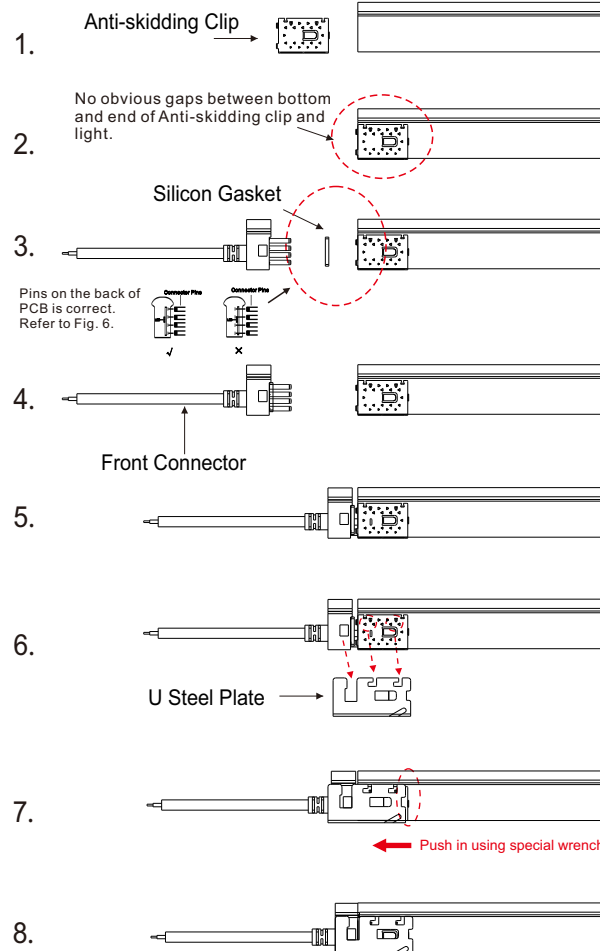


① Clasp Front Connector Assemble

Diagram

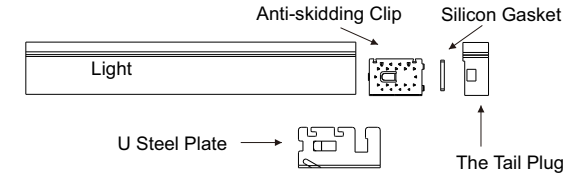


Step



② Clasp End Cap Connector Assemble

Diagram



Step

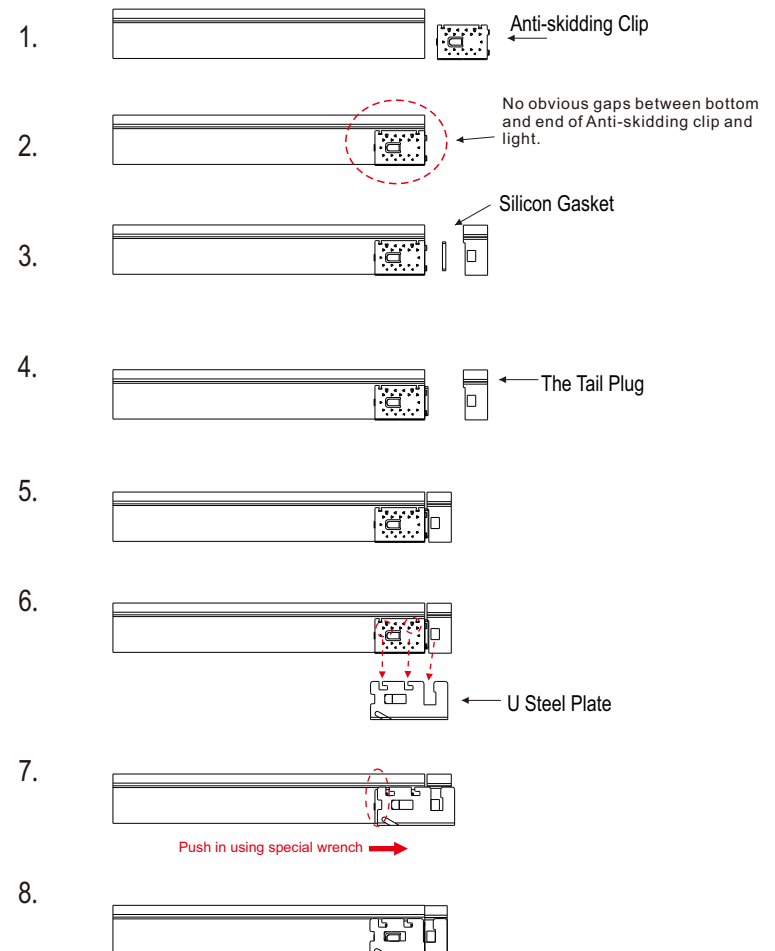
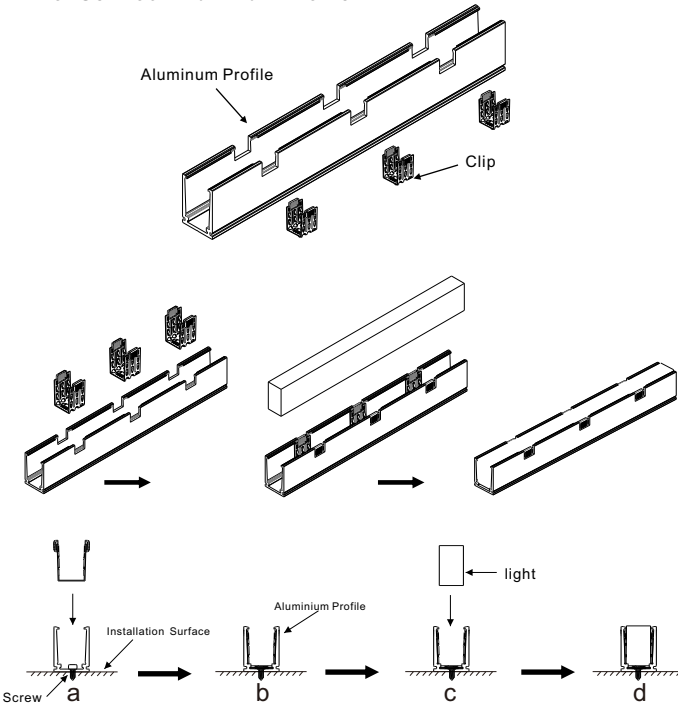


Fig. 11 Installation Guide

For Self-lock Aluminum Profile



For Common Aluminum Profile

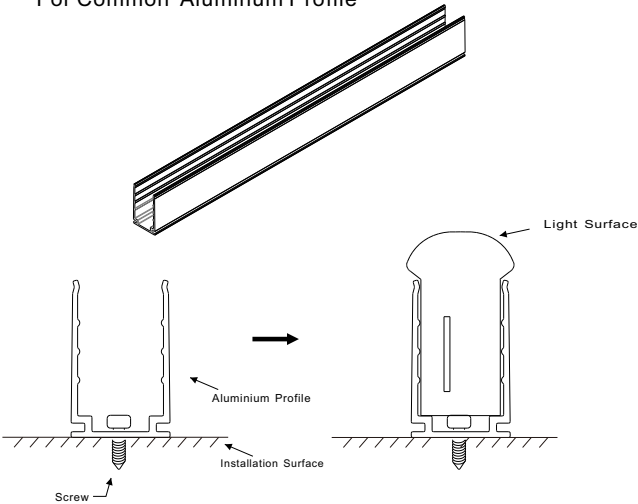


Fig. 12 Cable color coding basics

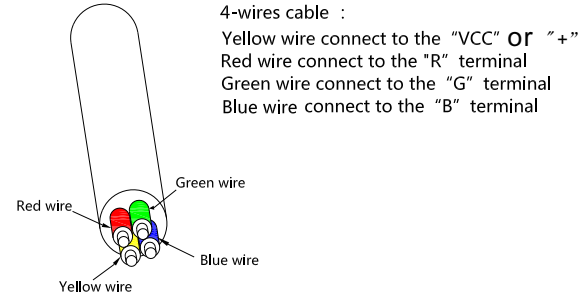
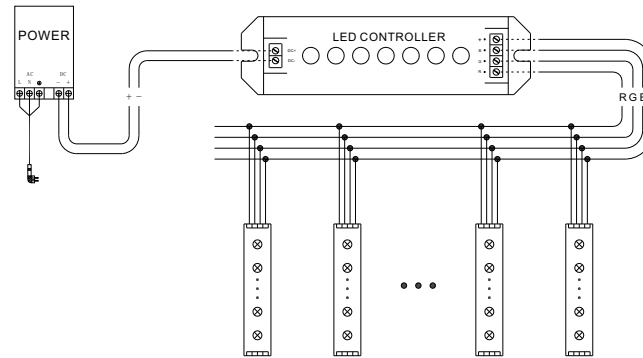


Fig. 13 Wiring Diagram



GUARANTEE

1. We provide lifelong technical assistance with this product: A 3 year warranty is given from the date of original purchase. The warranty is for free repair or replacement and covers manufacturing faults only. For faults beyond the 3 year warranty we reserve the right to charge for time and parts. Current technology will be selected first for repair or replacement.
2. Warranty excludes below:
 Any man-made damages caused from improper operation, assembly, wiring, connection, installation, transport and storage.
 Improper input voltage, current, operating and working environment.
 The product appears to have excessive physical damage.
 Damage due to natural disasters and force majeure.
 Product label or data code have been damaged.
3. Repair or replacement as provided under this warranty is the exclusive remedy to the customer. We shall not be liable for any incidental or consequential damages for breach of any stipulation in this warranty.
4. Any amendment or adjustment to this warranty must be approved in writing by us only.
5. This manual only applies to this model. We reserves the right to modify the manual and keep the right to make final explanation of this manual.